

# 2026 HLL Sizzler Coaches Meeting

Thursday, June 11th  
7:30 PM EMC Pavilion





2026 Directors

- Patrick Grucaela
- Heath Guay

HLL President: Matt Hodges

HLL VP Baseball: John Krammes

Fields: Justin Rogers

Umpires: Billie Jensen

Scheduling: Dave Ballas

Player Agent: Georgia Hall

Technology: Matt Hodges

Secretary: Liz Desrochers



## Agenda

- Summer League Summary
- Code of Conduct Policy
- Playing Rules (Highlights)
- Miscellaneous: Call-Ups, Make-Ups, Umps, Fields, Ground Rules



## Summary

- “B”-Level Summer League...**NO** Elite Players/Teams!
- Provide **Competitive AND Fun** Environment
- **Regular Season (12-JUN – 6-JUL)**
  - 8 Games for 8U
  - 10 Games for 9U – 12U
  - No Games 3-JUL – 4-JUL (Friday-Saturday).
  - No Games the Morning of the Timlin 5K Road Race (Saturday, 13-JUN)
- **Play-Offs (6-JUL – 15-JUL)**
  - All Teams Participate, Highest Seed **ALWAYS** Plays Lowest Seed
  - 8U (4-Team Division) – 2-Round Single-Elimination
  - 9U and 12U (6-Team Division) – 3-Round Single-Elimination (1 and 2 seed first round bye)
  - 11U (8-Team Division) – 3-Round Single-Elimination
  - 10U (9-Team Division) – 3-Round Single-Elimination (8 and 9 seed first round “play-in” game)



Age Division Breakdown				
8U	9U	10U	11U	12U
Algonquin	Algonquin	Algonquin	Ashland	Algonquin
Hopedale	Hopedale	Ashland	Framingham	Holliston
Hopkinton	Hopkinton-Green	Dover-Sherborn	Hopedale	Hopedale
Uxbridge	Hopkinton-Orange	Holliston	Hopkinton-Green	Medway
	Medway	Hopedale	Hopkinton-Grey	Shrewsbury
	Wellesley	Hopkinton	Hopkinton-Orange	Wellesley
		Medway	Medway	
		Shrewsbury	Wellesley	
		Wellesley		



## 2026 Age/Roster Exceptions

Sizzler **ALWAYS** Honors Cal Ripken Ages for NIPMUC

### 9U:

- Algonquin: One player confirmed “lower level B or C” player
- Hopedale: Four players confirmed “lower level B or C” players
- Hopkinton Orange: 6 players confirmed “lower level B or C” players
- Medway: Three players confirmed “lower level B or C” players

### 10U:

- Dover-Sherborn: Three players confirmed “lower level B or C” players
- Hopedale: One player confirmed “lower level B or C” player; Previously played with team in 2025
- Ashland: May use bottom three 9u Tondorf players as call-up players; cannot pitch

### 11U:

- Hopedale: One Cal Ripken aged player
- Medway: One Cal Ripken aged player

### 12U:

- Hopedale: Two Cal Ripken aged players



Schedule (Even Divisions = Fixed Schedule, Odd Divisions = Byes)

- 8U (4 Teams): Mon/Sat/Sun
- 9U (6 Teams): Mon/Fri/Sat/Sun
- 10U (9\* Teams): Any Day of Week
- 11U (8 Teams): Wed/Sat/Sun
- 12U (6 Teams): Thu/Sat/Sun

There are 33 teams participating in Sizzler this year- tied for the largest number ever in the tournament!  
Please be patient with any necessary rescheduling of games.

Games could be schedule on any day of the week as needed due to field availability or for reschedule rainouts.

\* The presence of byes in odd-team divisions causes 1-2 random weeknight games, and you won't play all three days every week (**check your schedules!!!**)



## HLL Website

- [www.hopkintonlittleleague.org](http://www.hopkintonlittleleague.org)
- Coaches must log scores and pitch counts
  - Directions in [Web Site User Guide](#) and in rules
- Rosters will be published on website
- If game is cancelled, all coaches will be notified via the website notification system
- Rescheduled games will also use the notification system

# Sportsmanship and Code of Conduct

- ▶ No one may question or argue ball/strike/judgment calls under any circumstances.
- ▶ Head coaches are responsible for the behavior of the players, parents and fans at the game. Any discourteous treatment of players, umpires or coaches is unacceptable. Any such acts will be reported to the HLL Board of Directors and corrective action will be taken.
- ▶ Only head coaches are allowed to discuss rule interpretation matters with an umpire during a game. Remember many of the umpires are often kids themselves and not adults. Violation can result in an ejection, as well as disciplinary action by the HLL Board of Directors.

# Sportsmanship and Code of Conduct

- Recorded / streaming video or still photography will not be used to argue the outcome of any call on the field or the result of any game
- All players/parents and coaches must hand in a signed hard copy of the Hopkinton code of conduct prior to play.

# Field Signs

EXAMPLE

## — PLEASE REMEMBER —

1. These are **KIDS**.
2. The umpires are **KIDS** too.
3. This is a **GAME**.
4. Coaches are **VOLUNTEERS**.
5. Your child is **NOT** being scouted  
by the Red Sox today.



*Thank You  
Hopkinton Little League*



## Playing Rules

- **Wooden or Approved USA Bats ONLY**
- Continuous batting order
- All players **must** play at least 1 FULL inning in the infield and outfield
- Infield/Outfield requirement must be fulfilled by end of 5<sup>th</sup> inning
- No player can play the same position for more than three innings (four for a catcher)
- Starting pitchers may pitch up to the daily pitch count limit. If that is a complete game, the OF requirement is not enforced. Otherwise, the pitcher must satisfy the OF requirement after being replaced



## Pitch Count Regulations

All baseball leagues must conform to Little League International pitch count rules (Regulation VI):

### 1. Per Game Limits

Age	Pitches Per Day
8	50
9-10	75
11-12	85

50-pitch daily limit supersedes 2-inning limit in 8U

### 2. Rest Requirements

Pitches Thrown	Days of Rest
> 65	4
51 – 65	3
36 – 50	2
21 – 35	1
< 21	0

**\*\* Must record pitch counts on HLL website within 12hr of finished game**

3. A pitcher who delivers 41 or more pitches in a game cannot play the position of catcher for the remainder of the day.

4. A player that has played catcher in four or more innings in a game is not eligible to pitch on that calendar day.



## Outfield 8/9U

The 8U and 9U divisions are allowed to field four (4) outfielders / ten (10) total players to minimize bench time for these age groups.

Players must be evenly distributed across the outfield when using four outfielders



## Limits on Stolen Bases

- 8U: **THREE** steals per inning (1 per player). No stealing home.
- 9U: **Four** steals per inning. Stealing home is allowed.
- 10U: **FIVE** steals per inning. Stealing home is allowed.
- 11U/12U: Unlimited. Stealing home is allowed.
- Stolen bases include any advancement when a ball is not hit (e.g., overthrows on a steal)
  - *Example #1: Runners on 1<sup>st</sup> and 2<sup>nd</sup>. Kid on 2<sup>nd</sup> steals 3<sup>rd</sup>, and the throw goes into left field. Kid advances home, and the runner from 1<sup>st</sup> is now on 3<sup>rd</sup>. How many steals are recorded? ANSWER = 4 STOLEN BASES*
- Coaches track this every inning (not ump)



## Limits on Stolen Bases

- *Example #2 - Nobody on. Batter hits a dribbler to the pitcher, and the Pitcher overthrows 1<sup>st</sup> base, so he heads to 2<sup>nd</sup>. The 1<sup>st</sup> baseman then overthrows 2<sup>nd</sup> base, and the ball ends up at the Center Field fence. The runner advances all the way home and scores. How many steals occurred?*



## Limits on Stolen Bases

- ***Example #2 - Nobody on. Batter hits a dribbler to the pitcher, and the Pitcher overthrows 1st base, so he heads to 2nd. The 1st baseman then overthrows 2nd base, and the ball ends up at the Center Field fence. The runner advances all the way home and scores. How many steals occurred?***
- ***ANSWER: NONE ... ball was hit in play, therefore there are NO STEALS recorded.***



## Limits on Stolen Bases

- **Example #3 - Your 9U/10U team has stolen 4 bases in the inning and has runners on 1<sup>st</sup> and 3<sup>rd</sup>. The runner from 1<sup>st</sup> heads to 2<sup>nd</sup> for the 5<sup>th</sup> and final steal; however, the runner on 3<sup>rd</sup> also steals home. Both are safe, but the 5-steal limit has been exceeded. What happens?**



## Limits on Stolen Bases

- **Example #3** – Your 9U/10U team has stolen 4 bases in the inning and has runners on 1st and 3rd. The runner from 1st heads to 2nd for the 5th and final steal; however, the runner on 3rd also steals home. Both are safe, but the 5-steal limit has been exceeded. What happens?
- **ANSWER** – Lead base is considered the final steal (runner from 3<sup>rd</sup> scores and runner on 2<sup>nd</sup> is required to return to 1<sup>st</sup> base)



## Limits on Stolen Bases

- *Example #4 - The runner on 2<sup>nd</sup> decides to steal 3<sup>rd</sup> without the 3<sup>rd</sup> base coach's approval. He gets thrown out dead to rights. Does this count toward the 5-steal limit in the inning?*



## Limits on Stolen Bases

- **Example #4 – The runner on 2<sup>nd</sup> decides to steal 3<sup>rd</sup> without the 3<sup>rd</sup> base coach’s approval. He gets thrown out dead to rights. Does this count toward the 5-steal limit in the inning?**
- **ANSWER: NO, an attempted steal where the runner is tagged out does NOT count towards the 5-steal limit per inning...the rule is STEALS, not steal ATTEMPTS...**
- **The runner is still out and counts towards the number of outs that inning even if the steal does not.**



## Other Rules (1 of 2)

- Dropped Third Strike (12U Only)
- Mercy Rule: 12 Runs (After Game Is Official)
  - *A game is considered official after 4 innings are completed*
    - *Ex # 1 : Home team leads 13-1, Middle of 4<sup>th</sup> - GAME OVER*
    - *Ex # 2: Visiting team leads 18-3, Middle of 4<sup>th</sup> - home team MUST bat and make it at LEAST 18-7 to continue to 5th*
  - *After middle of 4th, Mercy Rule is enforced when the run that makes it a 12-run differential scores, regardless of who is leading*
- Max 5 Runs/Inning for 1<sup>st</sup> 4 (9U/10U), 1<sup>st</sup> 5 (8U)



## Other Rules (2 of 2)

- No Balks (but balk coaching OK) or Hidden Ball Trick
- Infield Fly in Effect for ALL Divisions **EXCEPT 8U**
- Termination of Play
  - 9U-12U: When **Pitcher** possesses ball in mound area
  - 8U: When **ANY** infielder possesses ball in the infield
- **Two Hour Time Limit on All Games**
  - *Cannot start a NEW inning after the 1:45 mark*
  - *Game clock starts at conclusion of plate meeting*
  - **GAMES MUST START ON TIME**



## Call-Ups

- Allowed from rostered teams a year younger
- Should be used sparingly
- Not allowed to pitch
- Not allowed during playoffs
- Individual player can be used up to THREE times
- Be sure to communicate to opposing coach



## Make-Up Games

- PRAY for GOOD Weather !!!
- Coordinate with Opposing Coach (Pyne Field Generally Available)
  - May play on your home field if it's mutually agreeable
  - *You will LIKELY need to supply Umpires*
  - *\$65 MAXIMUM will be reimbursed (make-up games due to rain outs **ONLY**, not applicable to voluntary scheduling conflicts)*
- Notify Sizzler Director so that schedule is updated and umpires are assigned for games in Hopkinton



## Umpires

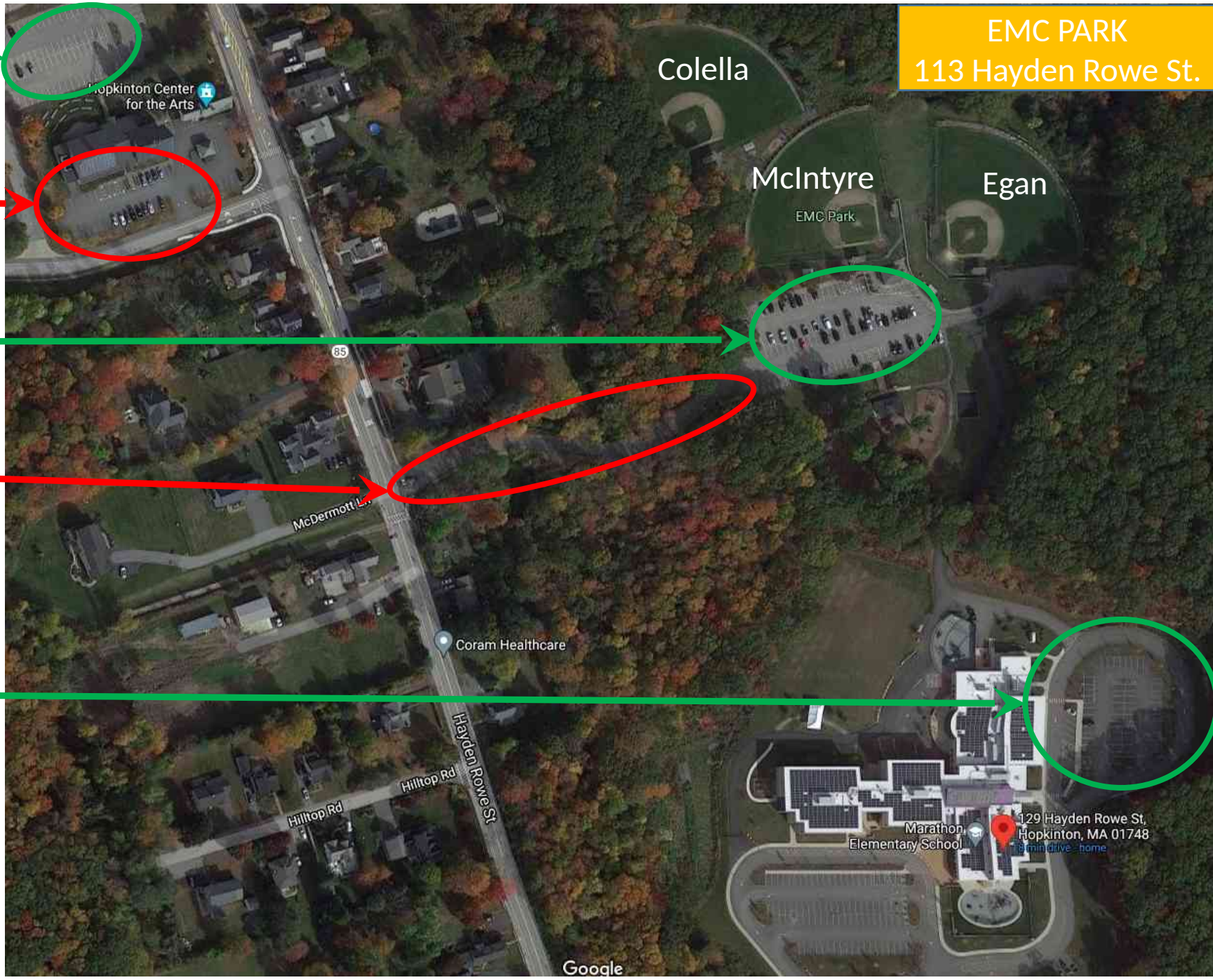
- Provided by HLL (“patched” or “non-patched”)
- All Umpires have completed a town training program
- Experience:
  - 2 years as Umpires
  - 1-2 years as Summer Ball Umpires
- Send us feedback (good or bad)
- Be KIND ... no one is perfect.



## Fields & Game Preparation

- Four primary fields (Egan, Colella, McIntyre, Carrigan 1), Two secondary fields (Pyne, HHS6), One “last resort” field (HHS Turf)
  - Ground rules for each field furnished in Sizzler Rules
  - Fields will be lined and dragged, portable mounds will be placed
- No infield practice before games
- Home team supplies baseballs
  - Provided by Sizzler Director at your 1st game
- Batting Cages Are Available 1 Hour Prior to Game Start Time
  - Home team for 1<sup>st</sup> 30 min, then Away team for last 30 min.
  - **Noise Ordinance: Can't take BP on SUNDAYS before 11:00 AM**

EMC PARK  
113 Hayden Rowe St.



- Additional parking at Hopkinton High School (90 Hayden Rowe St.)

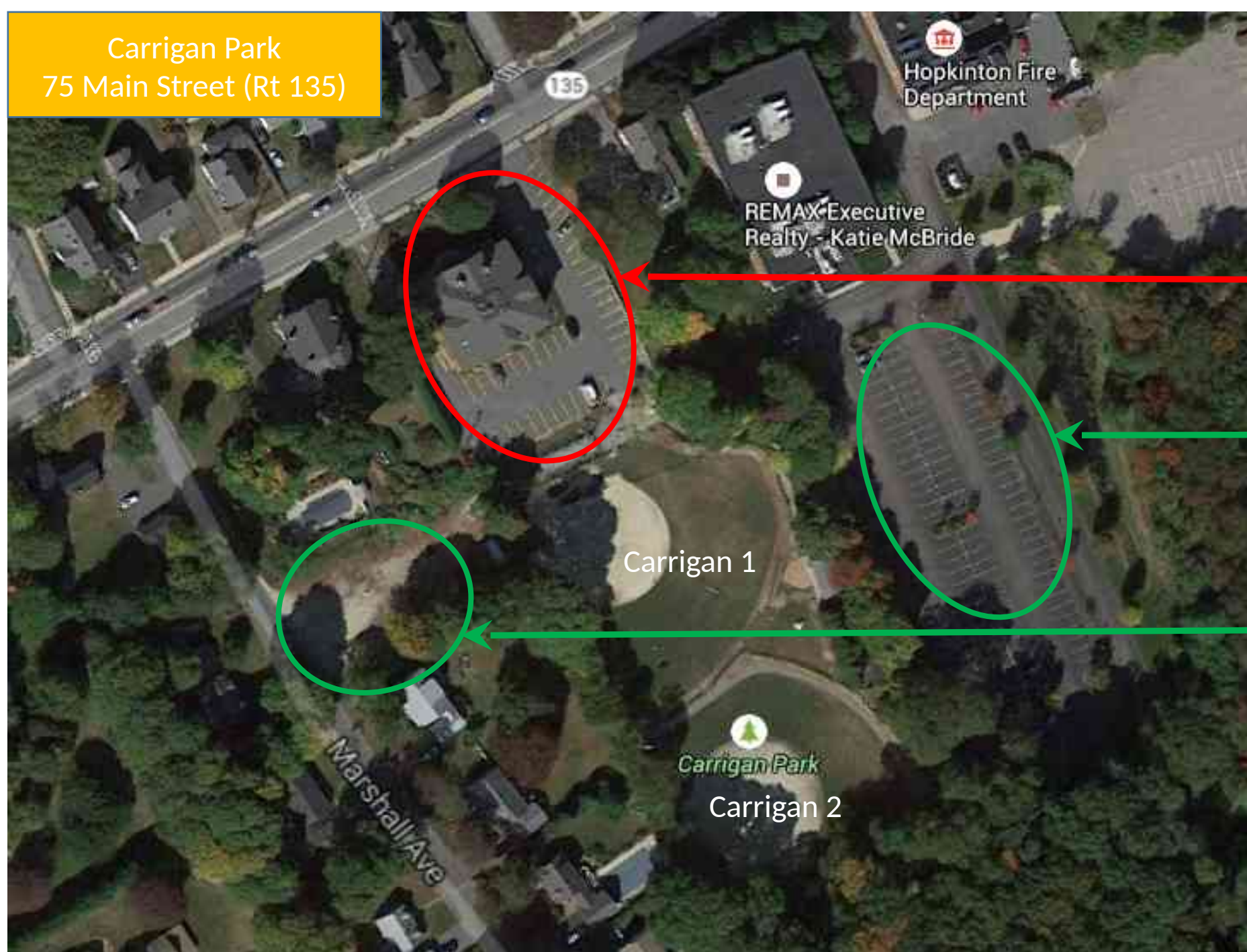
- DON'T park in HCA lot, you WILL LIKELY get towed

- Primary EMC Parking Lot. Park in MARKED SPACES ONLY!!!

- DON'T park along entrance road to EMC Park, you WILL be ticketed by Hopkinton Police

- Additional parking at Marathon Elementary School (129 Hayden Rowe St.)

Carrigan Park  
75 Main Street (Rt 135)



• **DON'T park in 85 Main Street Offices lot. You WILL LIKELY get towed.**

• **Primary Carrigan Parking Lot (Enter By Fire Station)**

• **Secondary Carrigan Lot (3 Marshall Ave.)**

Pyne Field  
40 Fruit Street

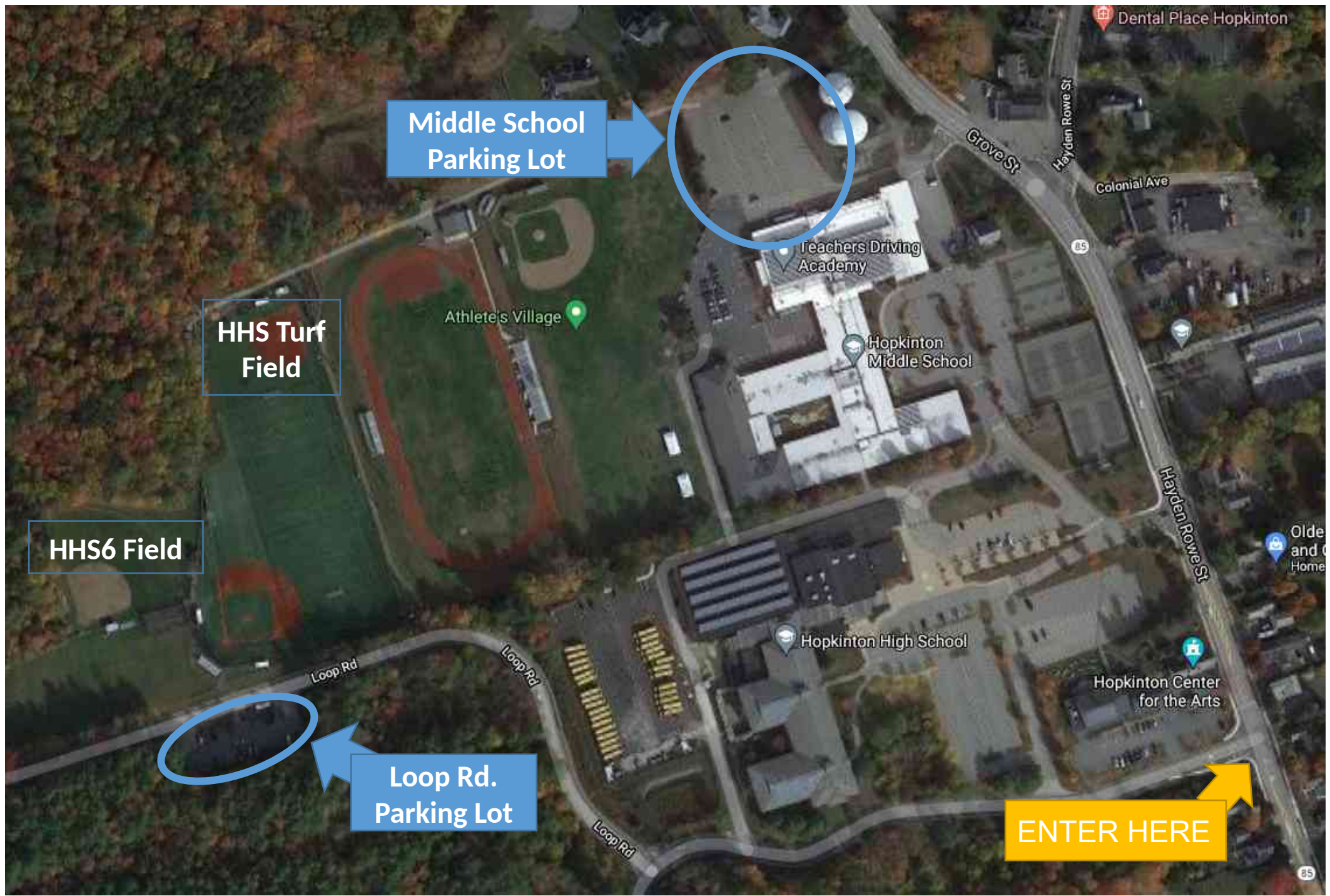
40 Fruit St

JB Sawmill &  
LandClearing, Inc.

ENTER HERE

PARK  
HERE





Middle School  
Parking Lot



HHS Turf  
Field

HHS6 Field



Loop Rd.  
Parking Lot



ENTER HERE



Teachers Driving  
Academy

Hopkinton  
Middle School

Hopkinton  
High School

Hopkinton Center  
for the Arts

Dental Place Hopkinton

Grove St

Hayden Rowe St

Colonial Ave

Hayden Rowe St

Loop Rd

Loop Rd

Loop Rd

85



**Questions ??**