

## **HSA Build Out Line Rule**

(August 2019 UPDATE)

HSA has adopted the WYS Build Out Line Rule for **U08 to U11** teams playing within HSA League play.

*(reference WYS All Levels League Implementation applies to 9U, 10U, 11U & 12U)*

The build-out line is used to promote playing the ball out of the back in an unpressured setting. When the goalkeeper has the ball, either during play or from a goal kick, the opposing team should move behind the build out line. The rule is designed to increase player development through more meaningful player touches in matches and is also intended to reduce goals from these scenarios.



## US Soccer 9U,10U,11U and 12U PDI (incl U8)

Washington Youth Soccer has adopted the US Soccer 9U – 12U Player Development Initiatives.

### **Please note the 9U - 11U age group changes that include:**

- No Heading. If player heads the ball regardless of the outcome (own goal, goal, preventing a goal) an indirect free kick is given, NO Card.
- The use of the Build out Line
- GK No Punting or Drop kicking

### **Build-out Line Reminders:**

- a. Goal-kick: the opposition can enter the “build out line” area as soon as the ball is kicked and has clearly moved.
- b. The ball is considered in play when it has been kicked and has clearly moved. Players for the team in possession of the goal kick may choose to position themselves inside the penalty area.
- c. GK in possession of ball with their hands. The opposition retreats back to the “build out line”, they can enter the build out area as soon as the goalkeeper puts the ball into play.
- d. If the GK puts the ball into play quickly (throw, roll or set the ball at their feet) the opposition can now defend immediately, even if they are inside the “build out line” area.

### **Offside:**

Is in effect at the **build out line** (NOT the halfway line) for 9U - 11U

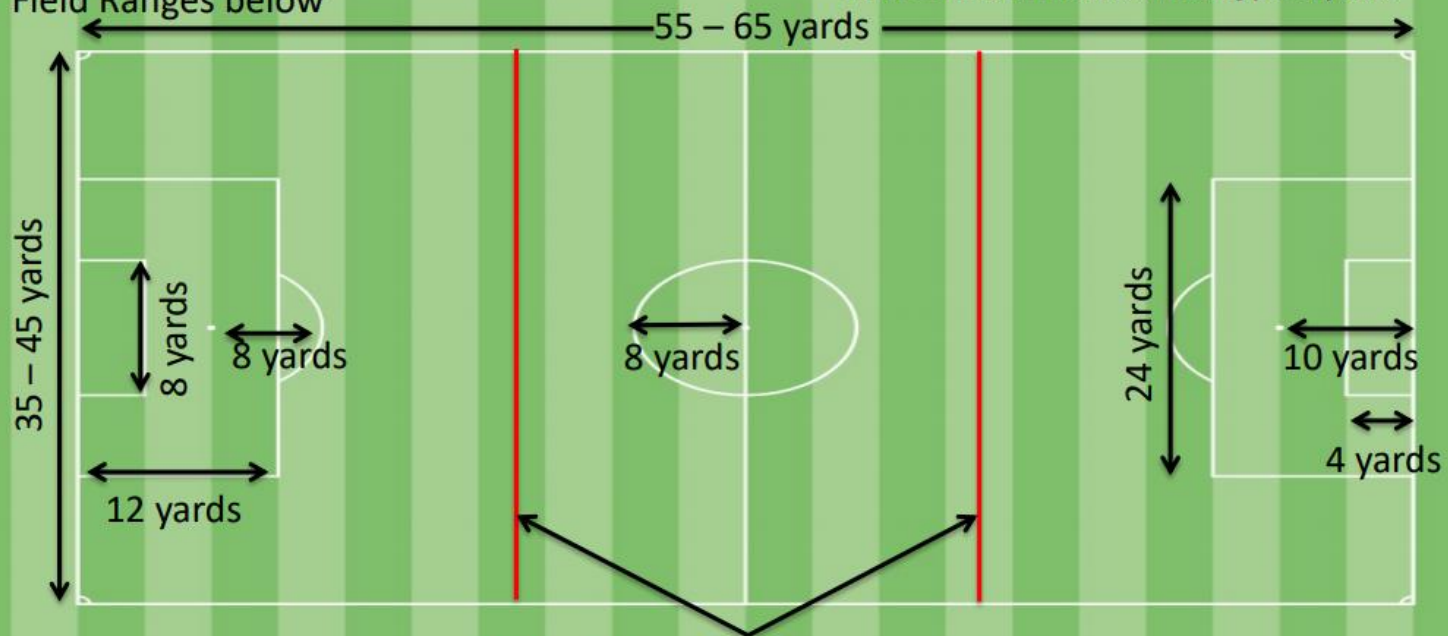
**The 12U age group follows FIFA Laws.**

## 9U-10U Rules of Competition *(incl U8)*

- **GK No punting or dropkicks**
- **No heading:** deliberate heading indirect free kick
- **Build out lines:** a. Goal-kick, The opposition can enter the build area as soon as the ball is kicked and has clearly moved, b. GK in possession with their hands. The opposition can enter the build out area as soon as the goalkeeper puts the ball into play.  
Example: If the goalkeeper makes a save and is in possession with their hands the opposition drops behind the build out line and if the goalkeeper places the ball on the ground the ball is in play.

Min Goal Size: 6.5 Height and 12 Wide  
Max Goal size: 6.5 Height and 18.5 Wide  
Field Ranges below

Match Length 2 x25 min  
7-ASIDE  
Offside at Build out line  
Direct & Indirect Free Kicks including penalty kicks



**Build out lines:** in-between the half-way line and top of the penalty area

## 11U Rules of Competition League Play ONLY

- **GK No punting or dropkicks**
- **No heading:** deliberate heading indirect free kick
- **Build out lines:** a. Goal-kick, The opposition can enter the build area as soon as the ball is kicked, and has clearly moved b. GK in possession with their hands. The opposition can enter the build out area as soon as the goalkeeper puts the ball into play.  
Example: If the goalkeeper makes a save and is in possession with their hands the opposition drops behind the build out line and if the goalkeeper places the ball on the ground the ball is in play.

Min Goal Size: 6.5 Height and 18.5 Wide

Max Goal size: 7 Height and 21 Wide

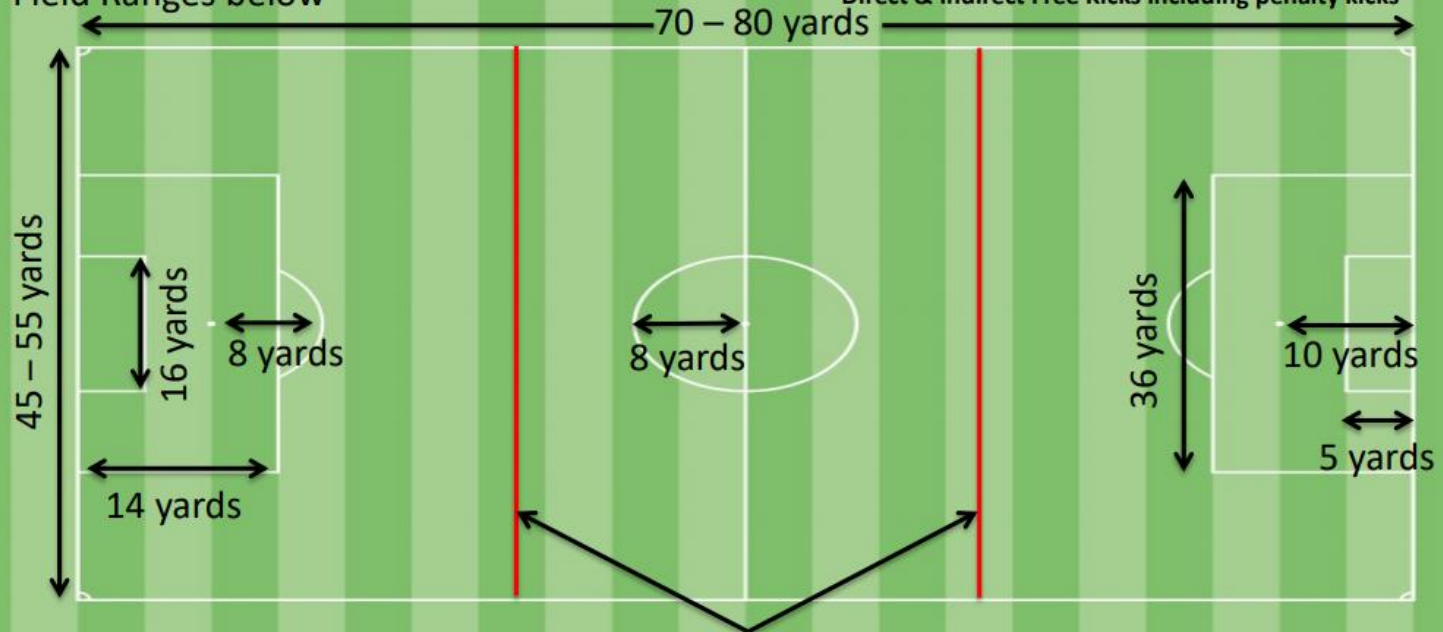
Field Ranges below

Match Length 2 x30 min

9-ASIDE

Offside at Build out line

Direct & Indirect Free Kicks including penalty kicks

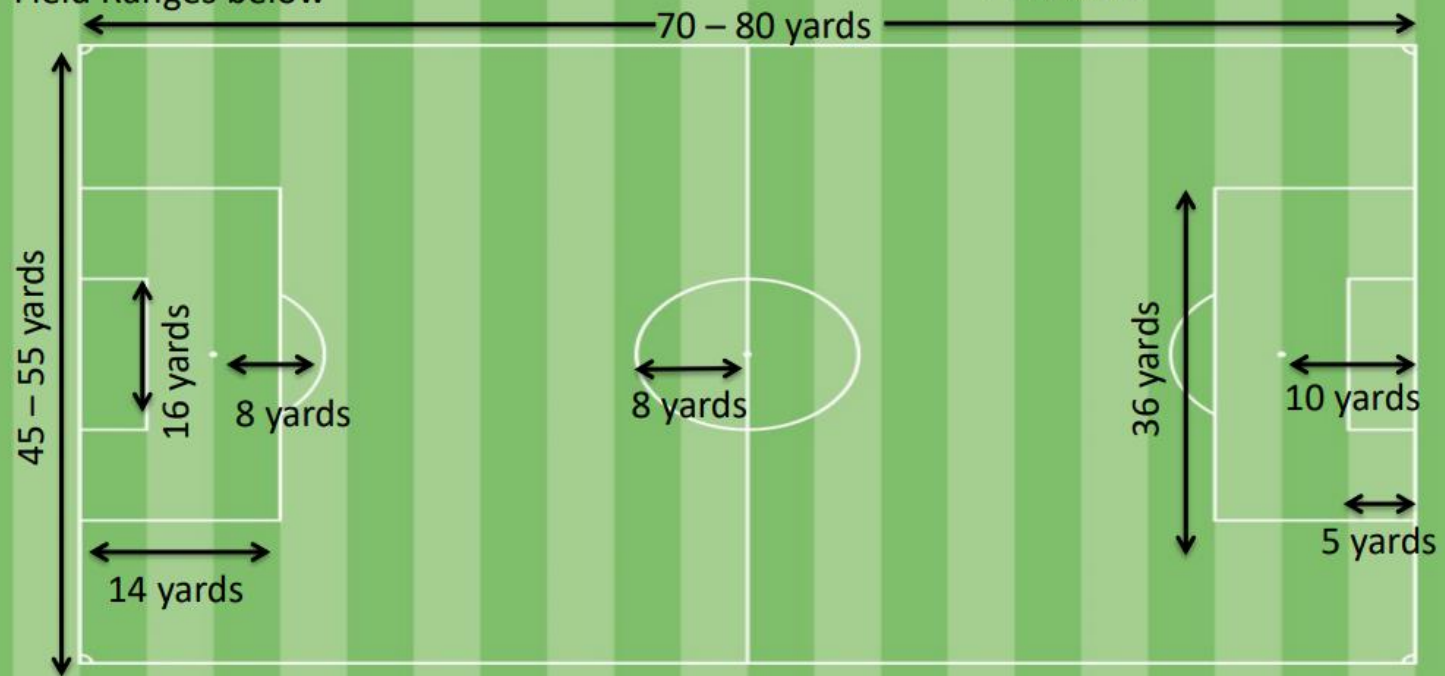


**Build out lines:** in-between the half-way line and top of the penalty area

## 12U Rules of Competition

Min 6.5 Height and 18.5 Wide  
Max Goal size: 7 Height and 21 Wide  
Field Ranges below

Match Length 2 x30 min  
9-ASIDE  
FIFA Laws





## Important Information

- Goals with solid posts and cross bar are to be used. No Bownet style goals to be used.
- Goals must have nets attached. The nets must be good working order.
- Build out line must be marked with line or flat markers as it serves as the offside line too
- Penalty kicks for all ages 9U+
- FIFA Laws of game with regard to direct and indirect free kicks, penalty kicks and throw-in.
- 12U- If field length does not meet PDI standards, if both coaches agree to play the game, NO PUNTING from GK allowed.