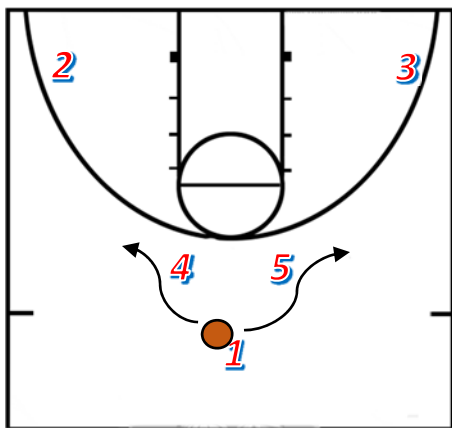
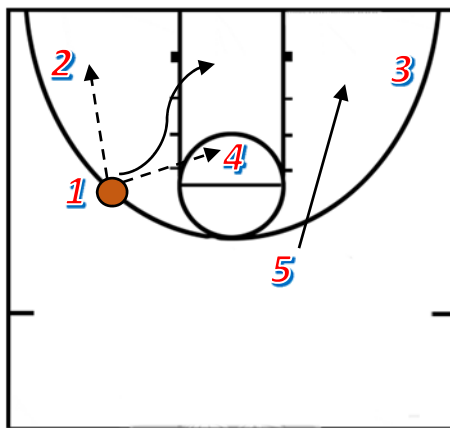


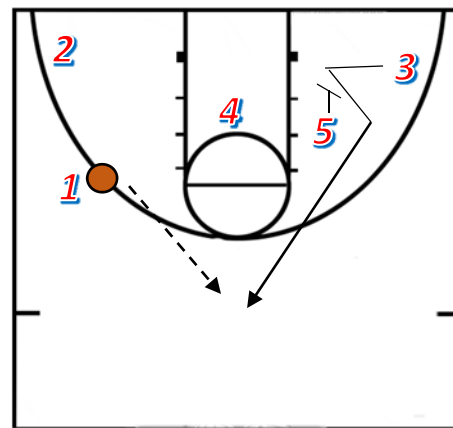
## TEAM OFFENSE: "A" SET



Players 4 and 5 angle in for a ball screen on Player 1's defender. Player 1 will choose a side to dribble to and use the screen of Player 4 or 5

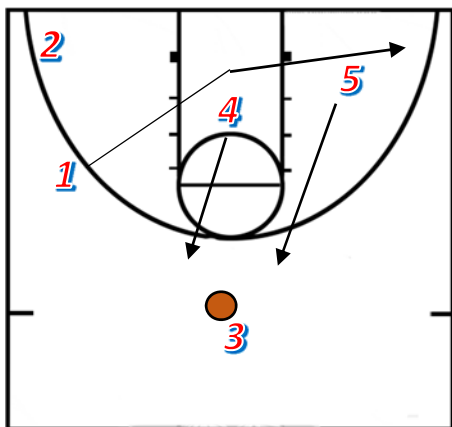


As Player 1 comes off the screen, he/she has the option to pass to 2, pass to 4 who is rolling to the basket after the screen, or drive to the basket. If there is no immediate scoring option, Player 5 will screen away for Player 3.

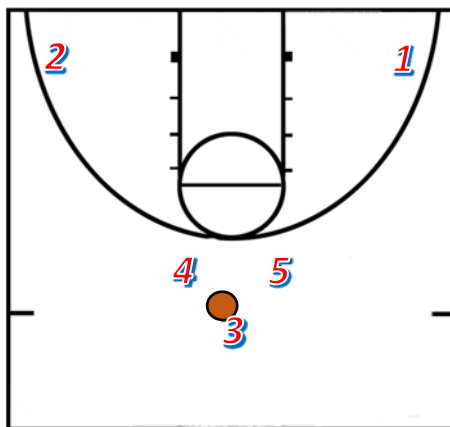


Player 3 will catch the pass at the top of the key and look for any immediate scoring option (shot, pass inside, open lane to drive)

## TEAM OFFENSE: "A" SET



To reset the offense Player 3 wait for 4 and 5 to return back up top for a ball screen. Player 1 will replace to the open corner.



The offense is reset and has the option for 3 to drive right or left off of the ball screen

### "A" SET

#### Benefits:

- Easy to initiate the offense with a ball screen
- Only requires a few decent ball handlers
- Open lane for dribble penetration and backdoor cuts
- Allows for big players to screen and their defenders to be drawn away from the goal.

#### Drawbacks:

- Requires a few guards that can go right or left
- Guards must make quick reads and decisions.