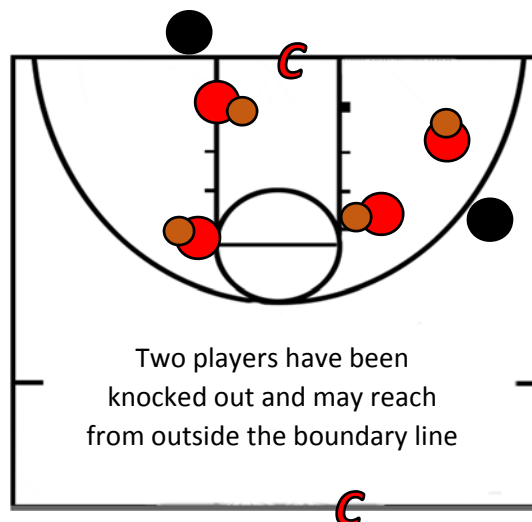
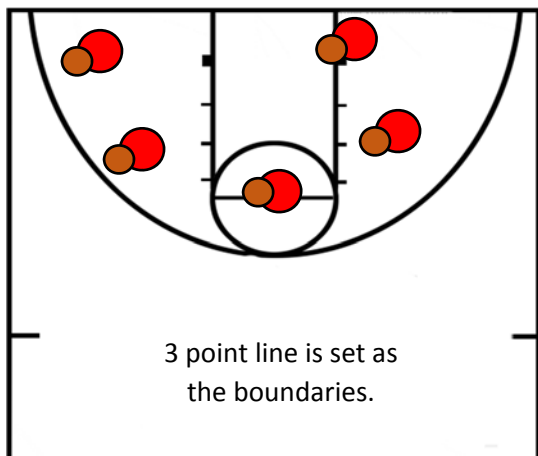


BALL HANDLING/OFFENSIVE SKILLS 8



Drill: "Dribble Knock-out"

Set up:



Directions:

- All players begin with a ball in their own space within the boundaries.
- On the signal, players dribble in space trying to protect their ball and knock away the other players.
- A player is knocked out if...
 - Their ball goes out of bounds
 - They pick up the ball with 2 hands
 - They excessively foul another player
- When a player is eliminated they will set their ball to the side and stand on the boundary line. Eliminated players may reach in to try and eliminate others but may not cross the boundary
- As more players are eliminated, reduce the size of the playing space.