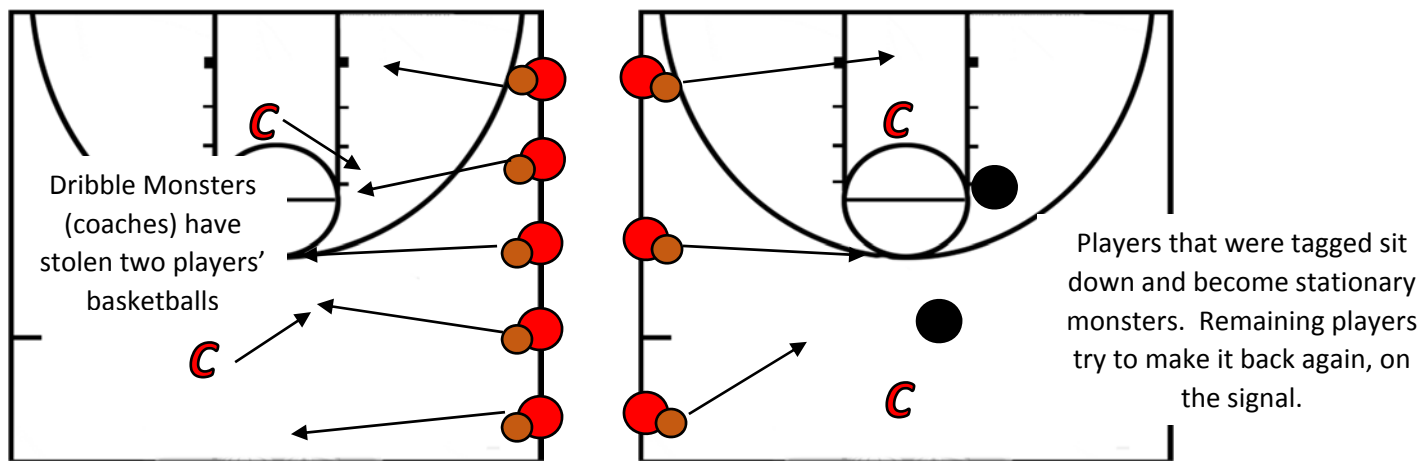


Set up:

Drill: "Dribble Monsters"



Directions:

- Position each player on the sideline with a basketball, dribble monsters start inside the circle.
- On the whistle players must dribble across to the other side without having their ball touched by the dribble monsters, if they make it across they stay in the game.
- If a player has their ball touched by a dribble monster they will put their ball to the side and sit down at the spot where the dribble monster got them.
- Players that are sitting down can try to swipe and to eliminate the remaining players to help the dribble monsters.
- Play until there is one remaining player
- Dribble monsters could be players, coaches, or parents