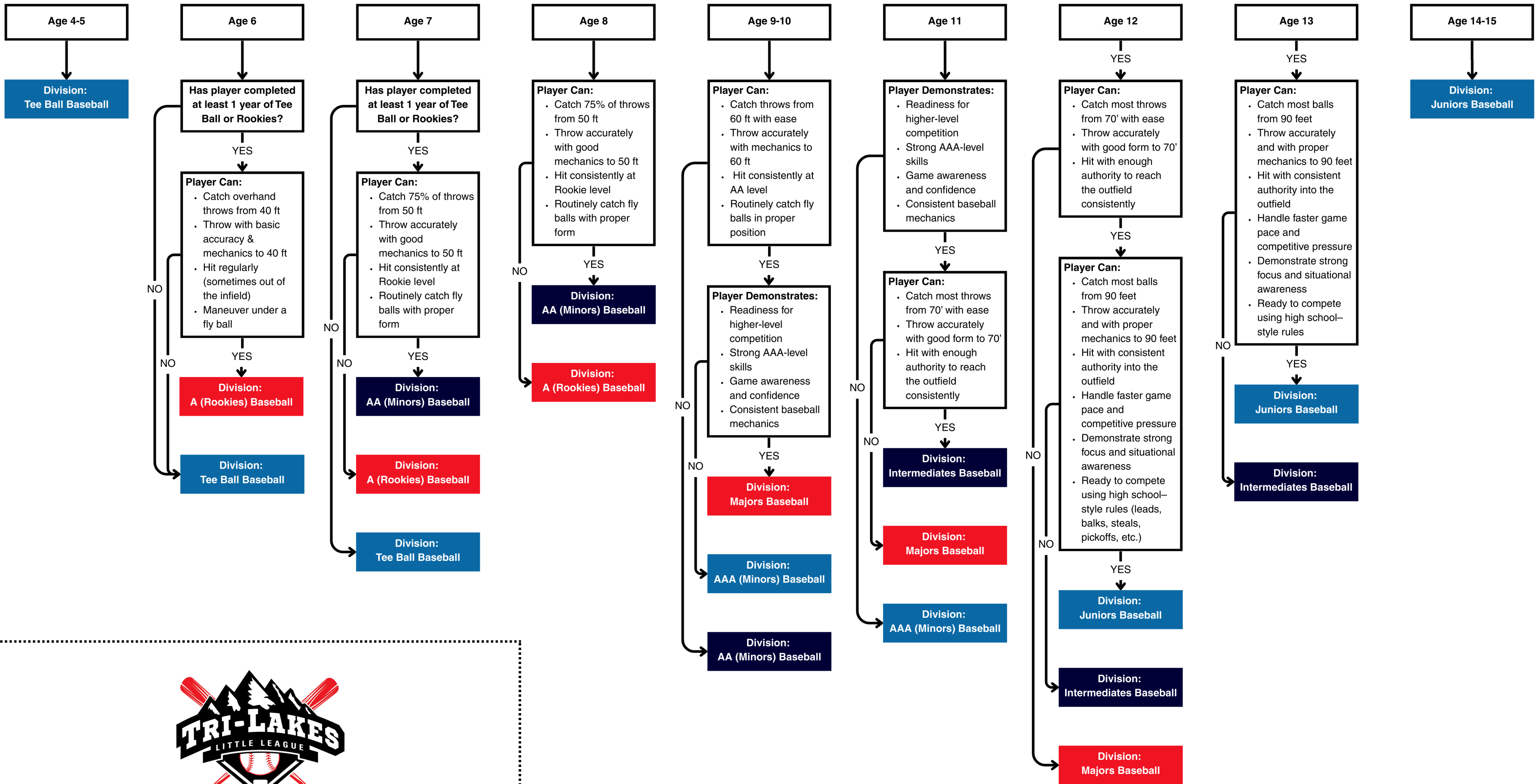


Baseball: Boys & Girls Ages 4 - 15



2026 Division Placement & Assessment Guide:  
How to Register Your Player

A player's league age is determined by his/her age on August 31, 2026.

Follow the flowchart to find your player's recommended division and assessment requirement.

- TLLL offers a skills-based instructional and competitive environment appropriate to each player's level so your child has the best Little League experience possible.
- Assessments are required for AA and above. Players should attend the session for the highest division they want to be considered for.
- Division placement is based on assessments, safety, development, and team availability. Attending an assessment does not guarantee placement in that division.
- Assessments are not tryouts — every player will be placed on a team.
- If a player registers for a higher-fee division but is placed lower, TLLL will refund the difference.
- TLLL reserves the right to make final placement decisions, and evaluation criteria may change as needed.