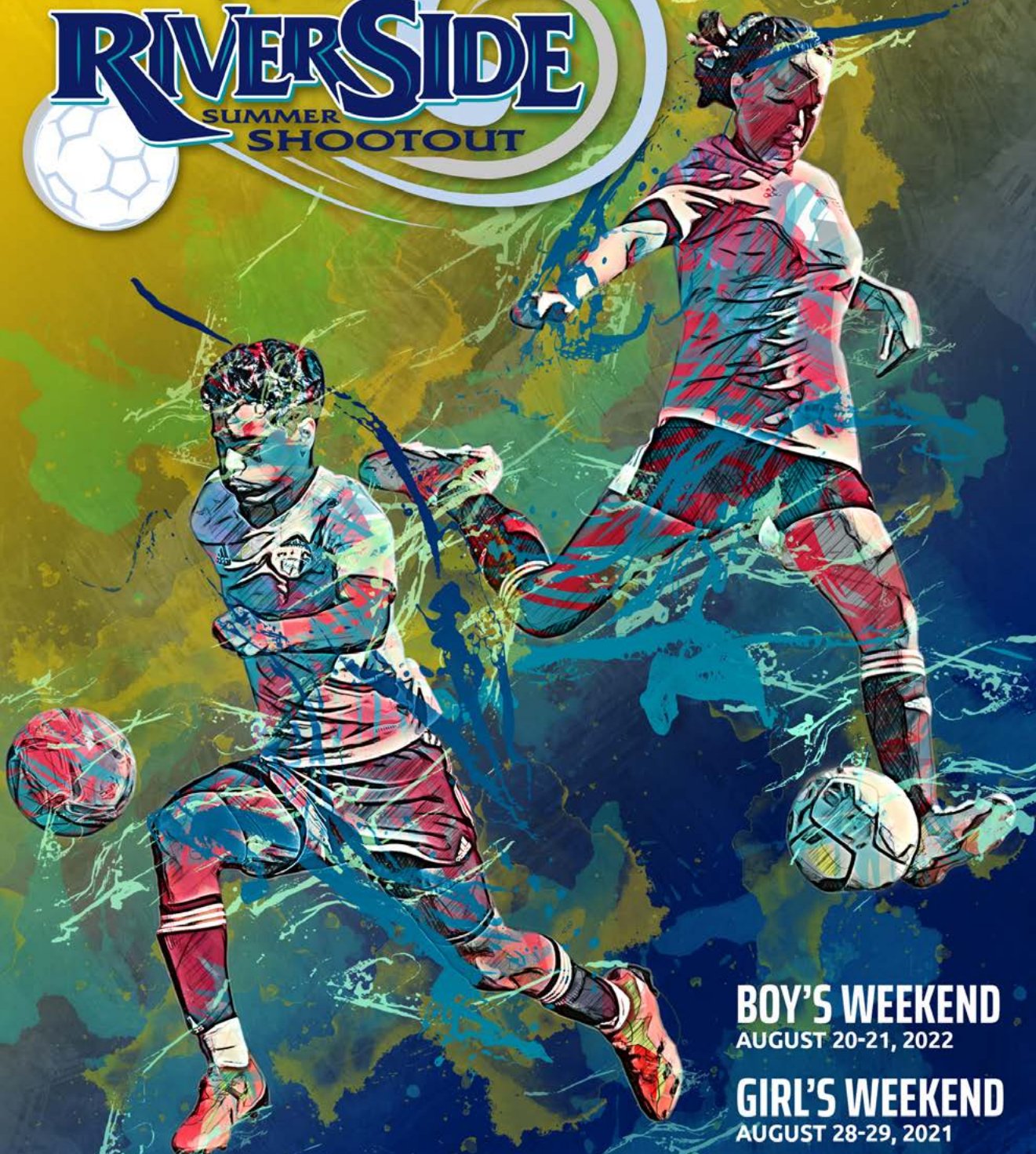


DADDY *Mac's*

# RIVERSIDE

SUMMER  
SHOOTOUT



**BOY'S WEEKEND**

AUGUST 20-21, 2022

**GIRL'S WEEKEND**

AUGUST 28-29, 2021



**DADDY** ★ *Mac's*

DOWN HOME DIVE



## RESERVE OUR UPSTAIRS LOFT FOR YOUR TEAM DINNER

A private space for up to 50 guests!

161 Biltmore Avenue | 828-505-2988 |   @EatAtDaddyMacsAVL

**EATATDADDYMACS.COM**



## TABLE OF CONTENTS:

ABYSA CORPORATE PARTNERS      pg 4

TOURNAMENT RULES AND  
REGULATIONS      pg 5

MAP TO FIELD LOCATIONS      pg 8

DIRECTIONS TO FIELDS      pg 9

Asheville is a great tournament destination and over 260 teams from North Carolina and surrounding states enjoyed great competition at our quality facilities in 2021! We host two competitive tournaments each year: The Riverside Summer Shootout held over two weekends in late August, and the Riverside Spring Kickoff held over two weekends in late January / early February.

**[WWW.ABYSA.ORG](http://WWW.ABYSA.ORG)**

Please visit our website for details about the ABYSA / Highland Football Club Tournament Series



ONE  
CLUB



# THANKS TO OUR MAJOR CORPORATE PARTNERS:

BILTMORE®

*The* **ingles**  
ADVANTAGE™



**Black**  
ORTHODONTICS



**ABC** PEDIATRICS  
*of Asheville*



**Clay Dangerfield**  
StateFarm 828-648-4712



## TOURNAMENT RULES & REGULATIONS:

August 19-21, 2022 (Boys) • August 26-28, 2022 (Girls)

**Tournament Check-In:** Check-in will be available ONLINE through the SINCSports website.

A team representative is required to either provide documents via online check-in OR attend check-in and submit the following documentation for all USYS, US Club, or other USF affiliates:

1. Official 2022-23 Match Roster (and 4 copies)
2. Laminated Coach & Player Passes (Photo, Official Stamp, & Signature)
3. Player Medical Release Forms (provided by your state association or USF affiliate) \*Note: Medical release forms are not required to be uploaded through the online service, but should always be available to the team at each match.
4. Guest Player Form (provided by your state association or USF affiliate)
5. Notification to Travel for out of state teams (provided by your state association or USF affiliate)

**Eligibility:** The tournament is an unrestricted tournament and is open to all USYS and USF affiliate teams. No player shall play for more than one team during the tournament. Players must play within their age group classification or within an older age group classification. Teams must be properly registered and in good standing with their respective association or affiliate. All players must be properly registered with the team on which they are playing and must have a current player pass card. Please note that all documentation will be checked at tournament registration (see above).

**Format:** Only Classic (Select) level teams will be accepted into the tournament. Teams may be placed in a combined division at the discretion of the tournament. Divisional status and past results will be used to create fair and competitive divisions. All teams will be guaranteed three (3) games. Divisions of 4-10 teams will be created depending on the number of accepted teams in an age group.

**Entry Fees:** Entry fees are listed on the Permission to Host Form.

**Roster and Passes:** 2022/2023 USYS, US Club, or other USF affiliate team match rosters and passes will be used for this tournament. These will be presented by the team representative at check-in.

**Laws of the Game:** All matches played during this tournament will be played in accordance with the FIFA Laws of the Game. Some rules and/or interpretations provided by USYS and/or NCYSA for youth matches are incorporated, as well as some rules detailed in the USYS National Championship rules.

**Covid-19 Tournament Protocols:** At the time of the adoption of these tournament rules, pandemic protocols make certain safety policies and procedures mandatory. These are very likely to evolve over time. Tournament teams and their families will agree to abide by all Riverside Tournament Rules as pertains to these or other health and safety concerns. The tournament will post and publish details as they become available.

**Field Check-In Time:** Teams must be at the field 30 minutes prior to their match time and present themselves to match officials. Teams must be prepared to begin the match at the designated match start time. At the conclusion of the match, each coach will verify the score of the match and sign the match report provided by the referee.



**Guest Players:** A maximum of five (5) guest players will be permitted unless otherwise approved in advance by the Tournament Director. A team may only roster guest players from the corresponding level of play or from a lower level of play. Teams bringing guest players may bring no more players than their maximum allowed roster size.

**Ball Size:** 10 thru 12 age groups shall use a size four (4) ball. All age groups 13 and older shall use a size five (5) ball.

Player's Equipment:

- A. Shin guards are mandatory.
- B. All players within each team must have matching uniforms. Each player shall have a number affixed to the back of the jersey and clearly visible. Numbered jerseys for goalkeepers are optional.
- C. Visiting teams must wear predominantly white or light colored uniforms.
- D. Where jersey colors for each team are similar or identical, the designated
- E. home team shall change jerseys. The (The "home" team is listed as the first team on the official schedule).
- F. The goalkeeper must wear a jersey of neutral color.
- G. No jewelry may be worn on the field and medical bracelets or tags must be taped to the body.
- H. Casts or protective equipment may be worn only if approved by the referee.
- I. The referee will determine the legality and safety of all player equipment.

**Inclement Weather:** Regardless of weather conditions, coaches and their teams must be ready to play as scheduled. A forfeit will be awarded if a team is not prepared to play within 15 minutes after the scheduled match time. Only the Tournament Director or his designee has the power to cancel, postpone or shorten the match prior to its commencement. Should a match be terminated due to inclement weather after the first half has been completed, the match will be considered official and the score will stand. If a match in progress is terminated before the end of the first half or canceled due to inclement weather, it will not be rescheduled and each team will be awarded a 0-0 score and one (1) point. Matches will not begin or will not be allowed to continue if lightning exists in the area. Tournament Officials will determine when it is safe to resume play after lightning has been sighted.

In age groups where the competition cannot be completed through the championship match due to inclement weather, the Tournament Director will determine the division winner and runner-up. The Tournament Director's decision will be final and will not be subject to protest or appeal. Should games or the entire tournament be cancelled due to inclement weather, there will be no refunds.

**Players/Rosters:** The maximum roster size is detailed on the Permission to Host form. One copy of a team roster is required to be provided to match officials prior to each game.

**Substitutions:** All players entering and leaving the field must do so at the mid-field line nearest to the designated team bench area. Teams are permitted unlimited substitutions during the following:

1. Throw-ins for the team in possession (if the team in possession makes a substitution, both teams may do so.)
2. Goal kicks for either team
3. Following a goal
4. After a stoppage to care for an injured player
5. Cautioned players at the time of the infraction
6. At halftime
7. Any other time with permission of the referee

**Referee:** The referee shall verify with the coach that players' equipment has been checked prior to each match. The score of the match must be reported to the tournament staff by the referee immediately following each match. Names of cautioned and ejected players must also be reported to the tournament staff.

**Assistant Referees:** The assistant referees shall assist the referee with field and player inspections prior to each match and perform other duties as dictated by the laws and the referee.

**Match Duration:** Match duration is addressed on the permission to host form.

Ties in preliminary group matches stand with no overtime. Should a final or semifinal match end in a tie, teams will go directly into the FIFA Penalty Kicks from the Mark to determine the winner of the match with no overtime. Prior to starting the FIFA Penalty Kicks from the Mark, the referee must ensure that each team has the same number of eligible players in the center circle. If one team has finished the game with fewer players than the other, the FIFA Reduce to Equate rule shall apply.

**Forfeits:** A forfeit shall be awarded if a team is not present to play within fifteen (15) minutes following the scheduled start time of the match. In preliminary match play, forfeits will be reported as 4-0 for scoring purposes. In the case of forfeit, the winning team is awarded a 4-0 score and the forfeiting team receives a 0-4 score in addition to having one (1) point deducted from its total points. Matches abandoned due to fighting (both teams involved) will be considered double forfeits and each team will receive a 0-4 score and have one (1) point deducted from its total points.

**Score Reporting:** The tournament will be responsible for providing a match report to the referee. The referee will confirm the score with each team after the contest. Scores will become official upon receipt of the match report at the tournament headquarters. Any team has the right to review cautions and/or ejections involving their team at the conclusion of the match, by visiting the tournament headquarters. Cautions and ejections of players are not subject to appeal.

**Division Standings:** Division standings in preliminary match play will be determined by the following point system:

Win	3 Points
Tie	1 Point
Loss	0 Points
Forfeit	-1 Point

**Divisional Ranking and Team Advancement Criteria:** At the conclusion of preliminary match play, teams will be ranked in their group based on the point system. Any situation in which two (2) teams have the same number of points will have the tie broken using the following criteria in the order listed, one after the other as needed:

1. Head to Head competition
2. Goal Differential (+/- 4 maximum allowed per match)
3. Fewest Goals allowed
4. Most Shutouts
5. FIFA "Penalty Kicks from the Mark" at a time/site to be determined by the Tournament Director.

If more than two (2) teams are tied, the sequence will begin at Goal Differential followed by the order listed until a team is eliminated. The remaining teams will then restart the sequence at Goal Differential until the tie is broken. If three teams are still tied after the tiebreaking criteria and FIFA "Penalty Kicks from the Mark" must be taken, there will be a draw by the tournament committee. The first team drawn will receive a bye while the next team drawn will be the home team against the remaining team in the first contest of FIFA "Penalty Kicks from the Mark." The winner of the first contest will then compete against the bye team in FIFA "Penalty Kicks from the Mark" to determine the winner. The bye team will be the home team.

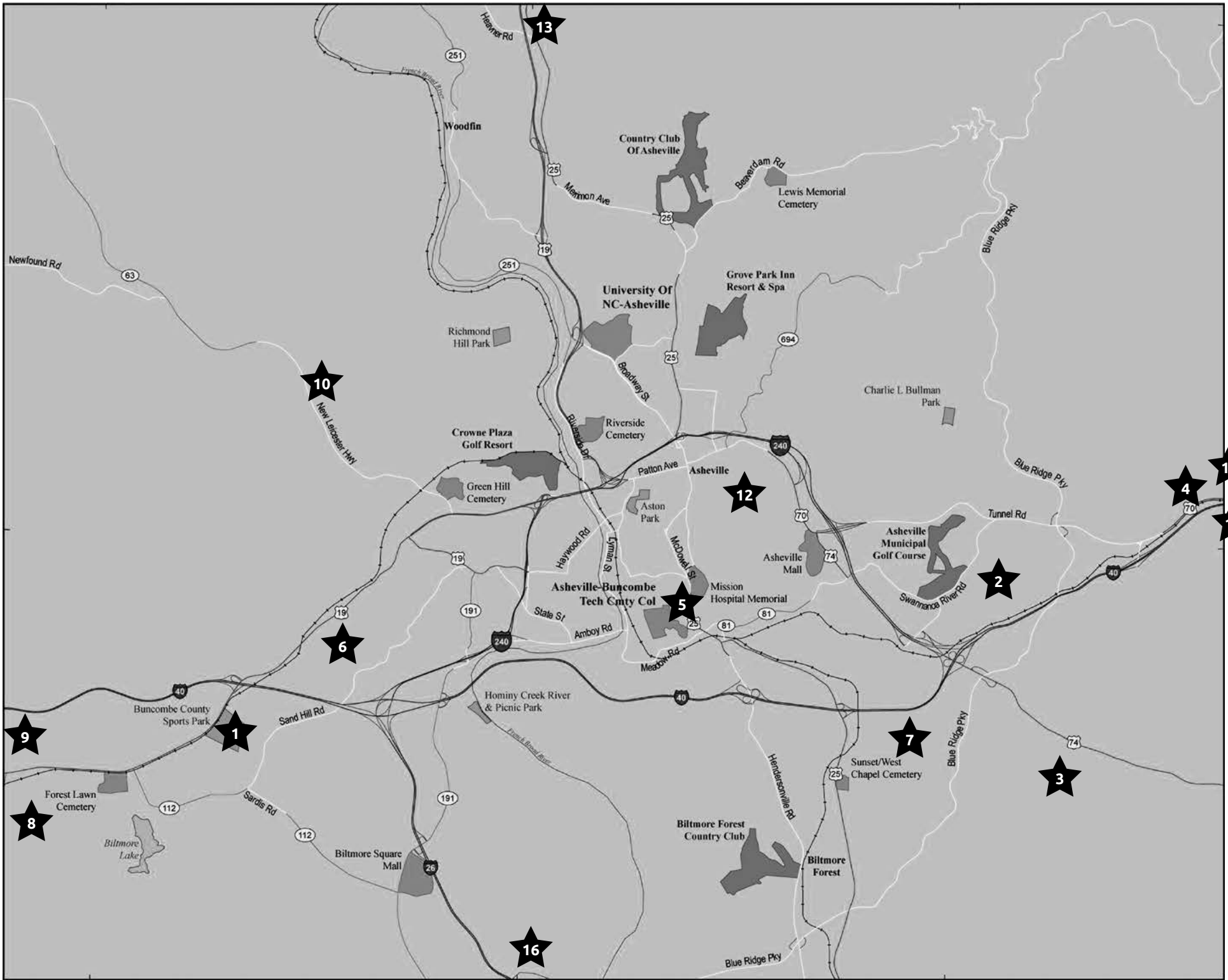
\*Please note: In consolation-level matches pairings will be edited, when possible, to avoid inter-club or inter-league matches.

**Fouls and Misconduct:** Any player ejected from the match will not be allowed to participate in their team's next match. Ejections for fighting will result in the player not being allowed to participate in his/her team's remaining matches in the tournament. The Tournament Director shall make this decision with the recommendation of the referee and referee administrator. Any coach ejected from a match will not be allowed to preside as coach for that team's next scheduled match. In situations in which the coach has more than one team in the tournament, he or she is allowed to preside as coach for his or her other team's next scheduled match. Coaches and players ejected from a match must be out of sight and sound of the field before the referee will resume play of the match.

**Parents and Spectators:** Parents and spectators attending a match are required to be located between the penalty area line and halfway line opposite of their team's bench area. Each coach is responsible for the conduct of their team's parents and spectators. Parents and spectators removed from a match must leave the facility for the duration of the match, and must be out of sight and sound of the field before the referee will resume play of the match. In addition, parents and spectators ejected from a match may be banned from attending any remaining matches in the tournament at the discretion of the Tournament Director.

**Fair play and good sportsmanship:** Teams are encouraged to exhibit good sportsmanship throughout the tournament.

**Protests:** No protests will be entertained.



- |              |     |  |
|--------------|-----|--|
| Main Complex | 1.  | Buncombe County Sports Park<br>58 Apac Circle<br>Candler, NC 28715                                     |
| Main Complex | 2.  | John B. Lewis Soccer Complex<br>439 Azalea Rd E<br>Asheville, NC 28805                                 |
|              | 3.  | AC Reynolds High School<br>1 Rocket Dr<br>Asheville, 28803   |
|              | 4.  | Asheville Christian Academy<br>74 Riverwood Road<br>Swannanoa, 28778                                   |
|              | 5.  | Asheville High School<br>419 McDowell Street<br>Asheville, NC 28803                                    |
|              | 6.  | Asheville School<br>360 Asheville School Rd.<br>Asheville, 28806                                       |
|              | 7.  | Carolina Day Athletic Complex<br>2351 Sweeten Creek Rd<br>Asheville, NC 28803                          |
|              | 8.  | Enka High School<br>475 Enka Lake Rd<br>Candler, NC 28715  |
|              | 9.  | Enka Middle School<br>390 Asbury Rd<br>Candler, NC 28715   |
|              | 10. | Erwin High School<br>60 Lees Creek Road<br>Asheville, 28806  |
|              | 11. | Montreat College Rusty Pulliam Stadium<br>(NOT ON CAMPUS)<br>209 Vance Ave<br>Black Mountain, NC 28711 |
|              | 12. | Memorial Stadium<br>Address:McCormick Field<br>30 Buchanan Place<br>Asheville, NC 28801                |
|              | 13. | North Buncombe High School<br>890 Clarks's Chapel Rd.<br>Weaverville, NC 28787                         |
|              | 14. | Owen High School<br>99 Lake Eden Road<br>Black Mountain 28711  |
|              | 15. | Owen Middle School<br>730 Old US 70<br>Swannanoa, 28778  |
|              | 16. | TC Roberson High School<br>250 Overlook Rd<br>Asheville, 28803   |





## DIRECTIONS TO FIELDS:

### **AC Reynolds High School**

**1 Rocket Drive, Asheville, 28803**

From I-40 East:

- From I-40 East take exit 53A for US-74A E toward Blue Ridge Pkwy/Bat Cave
- Make a slight right at US-74 Alt E/Charlotte Hwy
- Entrance to Reynolds High School will be on the right.
- Stadium parking on the left behind the school

From I-40 West:

- From I-40 East take exit 53A for US-74A E toward Blue Ridge Pkwy/Bat Cave
- Make a slight right at US-74 Alt E/Charlotte Hwy
- Entrance to Reynolds High School will be on the right.
- Stadium parking on the left behind the school

### **Asheville Christian Academy**

**74 Riverwood Road, Swannanoa, 28778**

From I-40 West:

- From I-40 West take exit 59
- Turn right at end of the ramp
- Turn left at the stoplight onto US Hwy 70
- Turn right at Old US Hwy 70
- Entrance to school is on the left

From I-40 East:

- From I-40 East take exit 55 toward US-70/E Asheville/VA Hospital
- Turn left at Porters Cove Rd
- Take the 1<sup>st</sup> right onto US-70 E/Tunnel Rd and continue on US-70 E
- Make a left at Old US Hwy 70
- Entrance to school is on the left.

### **Asheville High School**

**419 McDowell Street, Asheville, 28803**

Via AB Tech Campus, 340 Victoria Road, Asheville 28803

- Take I-40 to Exit 50 (Biltmore Avenue, Highway 25 North)
- Go North on Biltmore Ave, Highway 25
- PASS the main entrance to the high school (it will be on the left).
- Turn Right on Hospital Drive, then an immediate Right on Victoria Road.
- Enter the AB Tech campus and turn Left on Student Circle (adjacent Bailey Student Center)
- Park in the student parking there and walk down to the Asheville High Stadium.

### **Asheville School**

**360 Asheville School Rd. Asheville, 28806**

From I-40:

- From I-40 East take exit 44 for US-19/US-23
- Turn left at US-19N/US-23 N/US-74 Alt E
- Turn right at Asheville School Rd (destination on Left)

### **Buncombe County Sports Park**

**58 Apac Circle, Candler, NC 28715**

From I-40 East:

- From I-40 East take exit 44 for US-19/US-23
- Turn right at US-19 S/US-23 S
- Take the 1<sup>st</sup> right onto Acton Circle
- Take the 1<sup>st</sup> left onto Monte Vista Rd/Sand Hill School Rd
- Turn Right onto Apac Drive.

From I-40 West:

- From I-40 West take exit 44 for US-19/US-23 toward W Asheville/Enka-Candler
- Turn right at US-19 S/US-23 S
- Take the 1<sup>st</sup> right onto Acton Circle
- Take the 1<sup>st</sup> left onto Monte Vista Rd/Sand Hill School Rd.
- Turn right onto Apac Dr.

### **Carolina Day School Athletic Facility**

**2351 Sweeten Creek Rd Asheville 28803**

From I-40:

- From I-40 East take exit 51 for US-25A/Sweeten Creek Rd South
- Turn left at US-25 Alt S/Sweeten Creek Rd
- Drive 2 miles – complex will be on the right.

### **Enka High School**

**475 Enka Lake Road, Candler, 28715**

From I-40:

- From I-40 West take exit 44 for US-19/US-23 toward W Asheville/Enka-Candler
- Turn right at US-19 S/US-23 S
- Turn left at Sand Hill Rd
- Take the 1<sup>st</sup> right onto Enka Lake Rd. (destination on Left)

### **Enka Middle School**

**390 Asbury Rd, Candler 28715**

From I-40:

- From I-40 West take exit 44 for US-19/US-23 toward W Asheville/Enka-Candler
- Turn right at US-19 S/US-23 S
- Turn right at Asbury Rd (destination on Right)

### **Erwin High School**

**60 Lees Creek Road, Asheville, 28806**

From I-40:

- From I-40 take exit 44 for US-19/US-23
- Turn left at US-19 N/US-23 N/US-74 Alt E
- Turn left at N Carolina 63 W/New Leicester Hwy
- Turn right at Old County Home Rd.
- Take the 3<sup>rd</sup> right onto Lees Creek Rd. (destination on Left)

**Montreat College Rusty Pulliam Stadium (NOT ON CAMPUS)**  
**209 Vance Avenue, Black Mountain, NC 28711**

From I-40 East:

- On I-40 West, take Exit 64 (Black Mountain/Montreat).
- Turn right onto NC-9/Broadway Street.
- At the first traffic light, turn left onto Vance Avenue.
- At the four-way stop, continue through. To access the soccer and softball fields, DO NOT enter where the Montreat College sign is, continue past the entrance to the next right.

From I-40 West:

- On I-40 East, take Exit 64 (Black Mountain/Montreat).
- At the traffic light, turn left onto NC-9/Broadway Street.
- At the first traffic light, turn left onto Vance Avenue.
- At the four-way stop, continue through. To access the soccer and softball fields, DO NOT enter where the Montreat College sign is, continue past the entrance to the next right.

**John B. Lewis Soccer Complex**  
**439 Azalea Rd. E, Asheville, NC 28805**

From I-40 East:

- take exit 53B to merge onto I-240 W/US-74 Alt W toward E. Asheville.
- Take exit 8 for US 74A toward Asheville.
- Turn right at US-74 Alt W/Fairview Rd.
- Turn right at Swannanoa River Rd.
- Turn right at Gashes Creek Rd. Stay straight to Soccer Complex

From I-40 West:

- From I-40 West take exit 55.
- Turn right at end of ramp.
- Turn left onto US Hwy 70.
- Turn left onto Azalea Rd. (Soccer Complex will be on the left)

**Memorial Stadium**  
**30 Buchanan Ave, Asheville, NC 28801**

- Take I-40 to Exit 50 (Biltmore Avenue, Highway 25 North)
- Go North on Biltmore Ave, Highway 25.
- Stay in the right lane, and drive past Mission St. Joseph's Hospital and the Ford dealership.
- Go through 1 traffic light and turn right at the next street, McCormick Place (there is a Citgo Station on the corner)
- Take an immediate right on Buchanan.
- Go one block and veer left into the Memorial Stadium parking area, which is just beyond the main gate entrance to McCormick Field, home to the Asheville Tourists Class-A baseball team.
- Memorial Stadium is located above and behind McCormick Field.

**North Buncombe High School**  
**890 Clarks's Chapel Rd., Weaverville, NC 28787**

From I-40 West:

- Take exit 53B for I-240 toward Asheville
- Take exit 4A for US 19N/US 23N/US 70W/I-26 to Weaverville
- Take exit 17 toward Flat Creek
- Turn left on N. Buncombe School Rd
- Continue onto Old Mars Hill Hwy
- Turn left onto Clarks Chapel Rd

From I-40 East:

- Take exit 46B ON THE LEFT for I-240 toward Asheville
- Take exit 4A for US 19N/US 23N/US 70W/I-26 to Weaverville
- Take exit 17 toward Flat Creek
- Turn left on N. Buncombe School Rd
- Continue onto Old Mars Hill Hwy
- Turn left onto Clarks Chapel Rd

**Owen Middle School**  
**730 Old US 70, Swannanoa, 28778**

From I-40 East:

- From I-40 East take exit 59 toward Swannanoa
- Turn left at Patton Cove Rd
- Turn right at US-70 E
- Take the 1<sup>st</sup> left onto Whitson Ave.
- Turn right at Old US Hwy 70 (destination on Right)

From I-40 West:

- From I-40 East take exit 59 toward Swannanoa
- Turn right at Patton Cove Rd
- Turn right at US-70 E
- Take the 1<sup>st</sup> left onto Whitson Ave.
- Turn right at Old US Hwy 70 (destination on Right)

**Owen High School**  
**99 Lake Eden Road, Black Mountain 28711**

From I-40 West:

- From I-40 West take exit 59 toward Swannanoa
- Turn right at Patton Cove Rd.
- Turn right at US-70 E
- Turn left at Grovestone Rd.
- Turn left at Old US Hwy 70
- Take the 1<sup>st</sup> right onto Lake Eden Rd. (destination on Left)

From I-40 East:

- From I-40 East take exit 59 toward Swannanoa
- Turn left at Patton Cove Rd.
- Turn right at US-70 E
- Turn left at Grovestone Rd.
- Turn left at Old US Hwy 70
- Take the 1<sup>st</sup> right onto Lake Eden Rd. (destination on Left)

**TC Roberson High School**  
**250 Overlook Rd, Asheville, 28803**

From I-40 :

- From I-40 take exit 50 to merge onto US-25 South/Hendersonville Rd
- Drive approximately 5 miles
- Turn right onto Springside Road.
- Stadium is on the left behind Tennis Courts

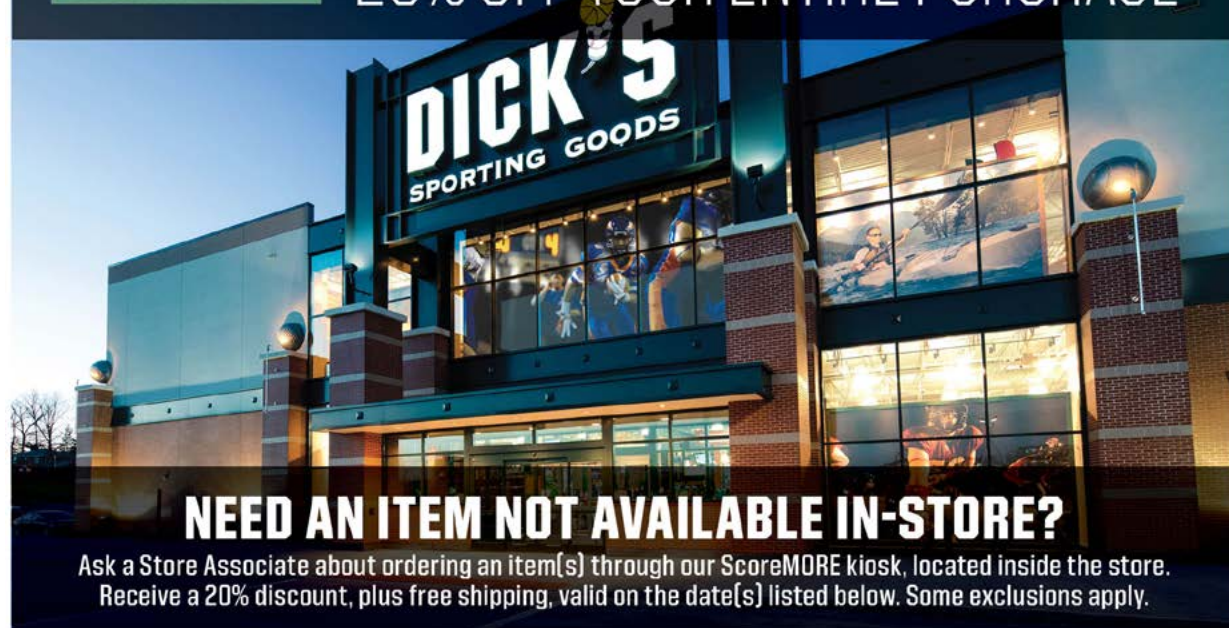
# BOYS' WEEKEND

EVERY SEASON STARTS AT



## EXCLUSIVE SHOP EVENT

20% OFF YOUR ENTIRE PURCHASE



### NEED AN ITEM NOT AVAILABLE IN-STORE?

Ask a Store Associate about ordering an item(s) through our ScoreMORE kiosk, located inside the store. Receive a 20% discount, plus free shipping, valid on the date(s) listed below. Some exclusions apply.

**ABYSA**

**Offers valid 8/19/2022 - 8/22/2022**

ABYSA

Valid 8/19/2022 - 8/22/2022

# 20% OFF THROUGHOUT THE STORE

EVERY SEASON STARTS AT



Limit one coupon per customer. Excludes: taxes, prior purchases, gift cards, extended warranties, such as the No Sweat Protection Plan, licenses, store credit, services or excluded items detailed in- store or at [DICKS.com/Exclusions](https://www.dicks.com/Exclusions). Cannot be combined with other offers. No reproductions or rain checks accepted. Offer not accepted at DICK'S Warehouse Sale or Going, Going, Gone!



P00046969O241BWY6

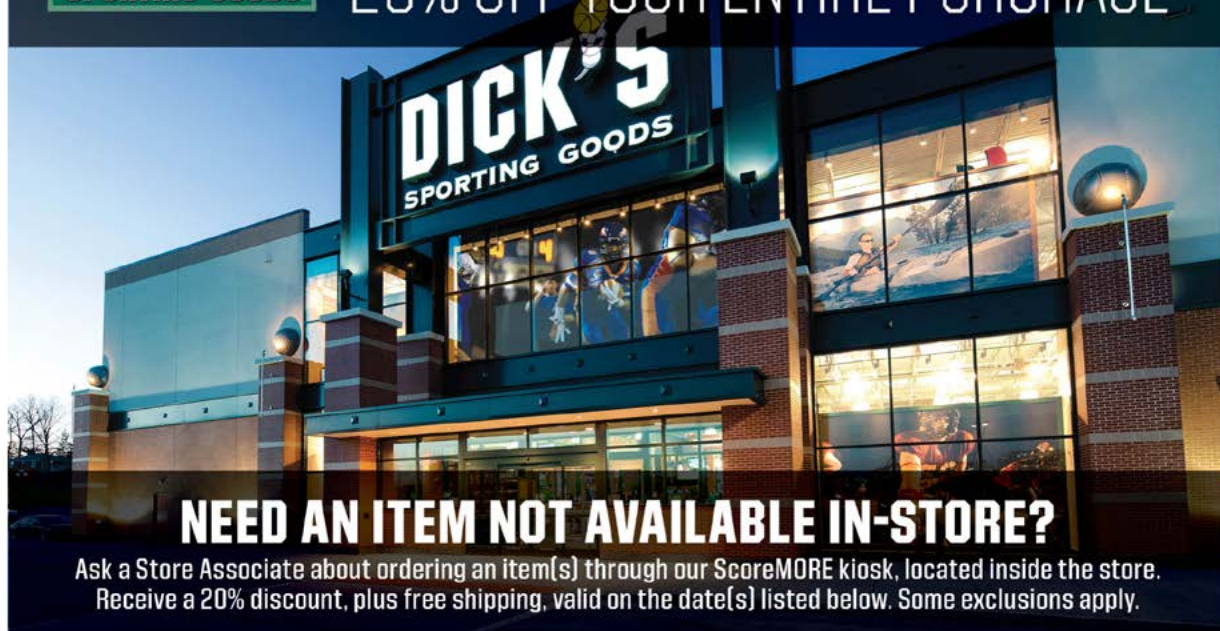
# GIRLS' WEEKEND

EVERY SEASON STARTS AT



## EXCLUSIVE SHOP EVENT

20% OFF YOUR ENTIRE PURCHASE



### NEED AN ITEM NOT AVAILABLE IN-STORE?

Ask a Store Associate about ordering an item(s) through our ScoreMORE kiosk, located inside the store.  
Receive a 20% discount, plus free shipping, valid on the date(s) listed below. Some exclusions apply.

**ABYSA**

**Offers valid 8/26/2022 - 8/29/2022**

ABYSA

Valid 8/26/2022 - 8/29/2022

# 20% OFF THROUGHOUT THE STORE

EVERY SEASON STARTS AT



Limit one coupon per customer. Excludes: taxes, prior purchases, gift cards, extended warranties, such as the No Sweat Protection Plan, licenses, store credit, services or excluded items detailed in- store or at [DICKS.com/Exclusions](https://www.dicks.com/Exclusions). Cannot be combined with other offers. No reproductions or rain checks accepted. Offer not accepted at DICK'S Warehouse Sale or Going, Going, Gone!



P000469690241BWY7





FAITH, FUN & FRIENDSHIP



# CAMP KANUGA



CampKanuga.org  
HENDERSONVILLE, NORTH CAROLINA





# GO AFTER YOUR GOALS

At United Community Bank, we help you field your financial needs.

## HENDERSONVILLE

2520 Chimney Rock Road | 828-698-5684



Member FDIC. © 2018 United Community Bank | [ucbi.com](http://ucbi.com)



ASHEVILLE ARTHRITIS

Asheville Arthritis & Osteoporosis Center





# SHERWIN WILLIAMS®

## ASHEVILLE AREA STORES

### **Skyland**

1913 Hendersonville Road  
Asheville, NC 28803  
(828)-684-5183

### **Arden**

417 Airport Road  
Arden, NC 28732  
(828)-650-6414

### **Asheville West**

1068 Patton Avenue  
Asheville, NC 28806  
(828)-253-6257

### **Asheville Main**

615 Merrimon Avenue  
Asheville, NC 28804  
(828)-252-7306

### **Asheville Commercial**

55 Sweeten Creek Road, Suite 10  
Asheville, NC 28803  
(828)-259-9628

### **Hendersonville**

320 South Main Street  
Hendersonville, NC 28792  
(828)-693-6918



**SCAN THE CODE TO  
SIGN UP & START  
SAVING!**





**Asheville is  
awesome!**



**SO IS ASHEVILLE  
REAL ESTATE !**

**Whether you want to BUY, SELL, or  
INVEST, I will help you  
get what you want.  
Give me a call, text, or  
email!**



James "Buck" Schall  
828-242-5949

[buck@dwelavl.com](mailto:buck@dwelavl.com)

Website: [dwelavl.com/buck/](http://dwelavl.com/buck/)



*I happily support, play, and  
watch local soccer.*





**EVENT SPONSORED BY:**



**THE BUYER'S AGENT**  
**asheville**

**Jeremy "Moe" Jordan**  
**(828) 450-0319**

[www.ashevillehomebuyer.com](http://www.ashevillehomebuyer.com)



The Buyer's Agent  
of Asheville

138 Charlotte Street, Suite 210  
Asheville, NC 28801

828.210.4661



West Asheville	1201 Patton Ave.	828.252.4878
East Asheville	1272 Tunnel Rd.	828.210.8325
South Asheville	1833 Hendersonville Rd.	828.274.1462
Weaverville	61 Weaver Blvd.	828.645.5088
Brevard	22 Trust Ln.	828.883.2600
Burnsville	41 Charlie Brown Rd.	828.536.5575
Foothills	140 W. Mills St. Columbus	828.802.1011
Waynesville	120 Frazier St.	828.210.8333



MERCY  
URGENT  
CARE

Only Mercy has **BrainScope** technology—fast, accurate and affordable head injury assessment for ages 13-85.  
[mercyurgentcare.org](http://mercyurgentcare.org) | 828.210.2121



**NOW OPEN!**

**ENJOY OUTDOOR SEATING**



**CANTINA LOUIE**

**MEXICAN STREET FOOD**

**LOCATED IN GERBER VILLAGE**



PUBLIX SUPER MARKETS

**CHARITIES**

# AFFORDABLE GOLF CARTS



**SALES & RENTALS**



**828-674-5752**  
**828-490-5127**



**CRAWLEY, LEE & COMPANY, P.A.**  
Certified Public Accountants and Management Consultants

P.O. Box 5595 Asheville, NC 28813

(828) 274-5524

(800) 562-2818

fax (828) 274-5591



**Bring this ad in to receive a FREE RAFFLE TICKET!!!**

**WNC's Largest Privately Owned Lego Store**

**Featuring Retired Sets, Minifigures, By The Pound, Build Your Own and Pick-A-Brick**

**We Buy/Sell/Trade Lego Used and New Sets, Minifigures and Bulk Legos!!!**

**BRICKVILLE**

**Asheville Mall**

**828-606-1039**



Ben (Chip) Craig Owner/Broker-In-Charge

Office: 828.669.1072	Cell: 828.273.8757
Fax: 828.669.5978	greybeardrealty.com



**KEVIN TOUPS**

IS YOUR



**"Kevin Touns has been the most responsive and motivated agent we've had the pleasure to work with. Stayed one step ahead of us the entire process. Took the time and effort to truly get to know us and our specified needs and situation.**

**Highly recommend to anyone looking to purchase or sell!" Wes & Heather W.**

**Call: 828-424-3107 or email: KTouns@KW.com**

**GO GET EM' ~ ABYSA ~ SOCCER TEAMS!!**



**Fast, fresh  
Delivery from  
130+ of  
Asheville's  
Best  
Restaurants**

Use the code  
**"RIVERSIDE"**  
at checkout for  
**FREE** delivery  
on your order!

Coupon expires 12/31/2022. Valid for a \$0 delivery fee on any order through Takeout Central. \$10 food minimum. Cannot be combined with any other offer.




**Come Dance With Us!**

**YOUR FIRST CLASS IS ON US**

**DANCE CLASSES AVAILABLE  
FOR AGES 3 & UP**

Follow Us:  centerstageavl  centerstage1

(828) 654-7010 • [dance@centerstage1.com](mailto:dance@centerstage1.com)  
38L Rosscraggon Road, Asheville, NC 28803  
[www.centerstageavl.com](http://www.centerstageavl.com)



## A Consignment Shop

specializing in outdoor adventure gear,  
clothing, and accessories

**99 Riverside Drive**  
Asheville, NC 28801

**828-258-0757**  
**[www.secondgearwnc.com](http://www.secondgearwnc.com)**  
[info@secondgearwnc.com](mailto:info@secondgearwnc.com)



# KONA ICE®

## BOOK US FOR YOUR NEXT EVENT!



Have KONA ICE® at your School, Festivals,  
Athletic Events and Corporate Events!

**Kona Ice of Asheville**  
828.772.4413 | [alaw@kona-ice.com](mailto:alaw@kona-ice.com) | [www.kona-ice.com](http://www.kona-ice.com)



Mountain Massage and Wellness

Massage Therapy  
Nutrition and Wellness Coaching

15 Possum Trot Rd. Unit #1  
Asheville, NC 28806  
828-778-0064

[www.mountainmassagewellnessnc.com](http://www.mountainmassagewellnessnc.com)



Specializing in Orthopedic Manual Therapy

9 Asbury Road, 202, Candler, NC 28715  
[www.katept.com](http://www.katept.com)

Kate Hoppensteadt, MSPT, MMPT, COMT, FAAOMPT

P: 828-702-3753      KatePT @ bellsouth.net

**GOOD LUCK ABYSA SOCCER TEAMS!**

**VISIT ONE OF OUR CONVENIENT LOCATIONS AFTER THE GAME:**

**85 Tunnel Road, 1296 Patton Avenue  
& 298 Smokey Park Dr. • Asheville, NC**



**\$1.99**  
**HAMBURGER**  
**KING JR MEAL**



™©2022 Burger King Corporation  
All Rights Reserved



**OFFER VALID AUGUST 1 - OCTOBER 31, 2022**