

OFFICIAL LACROSSE SIGNALS



1. Timeout. For Discretionary or Injury Timeout, Follow Signal Above with Tapping of Hands on Chest



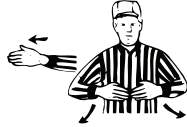
2. Score



3. No Score



4. Faceoff



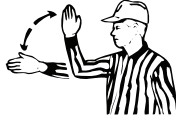
5. Alternate Possession



6. Ball in Possession on Faceoff and Start the Clock at Halftime



7. Ball has Entered Attack Area



8. Out of Bounds Direction of Play



9. Failure to Advance the Ball



10. Loose Ball



11. Simultaneous Fouls

PROCEDURAL SIGNALS

1

OFFICIAL LACROSSE SIGNALS



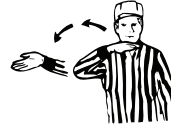
12. Non-Releaseable Penalty



13. Counts



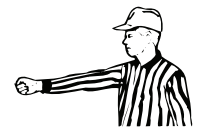
14. Stalling Warning



15. Re-entry of the Crease



16. Play-On, Dead Ball or Dead Ball Followed by Appropriate Foul Signal



17. Inadvertent Whistle (Face Press Box)



18. Disregard Flag

PROCEDURAL SIGNALS

OFFICIAL LACROSSE SIGNALS



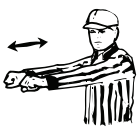
19. Personal Foul



20. Illegal Body Check



21. Slashing



22. Cross Checking



23. Tripping



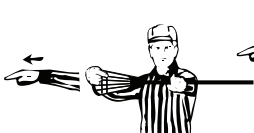
24. Unnecessary Roughness



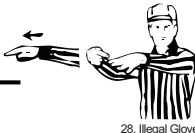
25. Unsportsmanlike Conduct



26. Illegal Equipment (Crosse)



27. Deep Pockets



28. Illegal Gloves (or point to other illegal equipment)



29. Expulsion Foul

PERSONAL FOULS

OFFICIAL LACROSSE SIGNALS



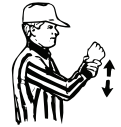
30. Technical Foul (Time Served)



31. Interference



32. Illegal Offensive Screening



33. Holding



34. Warding Off



35. Pushing



36. Withholding Ball from Play



37. Stalling



38. Offside



39. Crease Violation



40. Conduct Foul



41. Illegal Procedure



42. Substitution Infraction



43. Illegal Touching of the Ball

TECHNICAL FOULS