



CD (Central Defence)

Areas to be..

Click me!



Attributes to look out for..

Out of possession:

- *Communicate & Organize*
- *Adapt to the opposition threat*

In possession:

- *Find a simple pass*
- *Always be an option*



CM (Central Midfield)

Areas to be..

Click me!



Attributes to look out for..

Out of possession:

- *Be prepared to drop back*
- *Think of how to regain possession*

In possession:

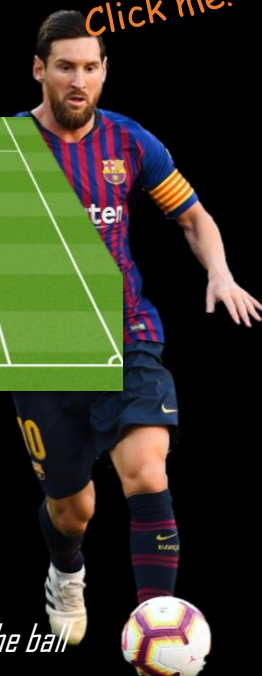
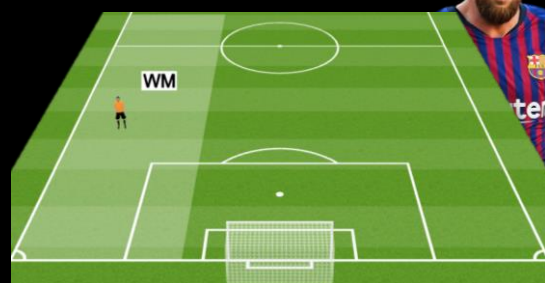
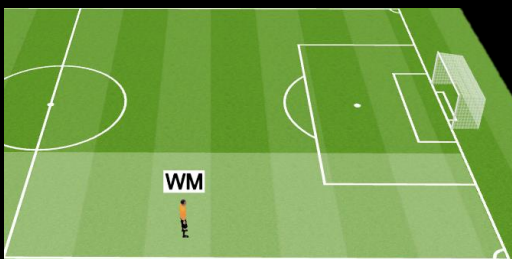
- *Be creative (simple/complex)*
- *Find space & retain possession*



WF (Wide forward)

Areas to be..

Click me!



Attributes to look out for..

Out of possession:

- *Condense the field*
- *Apply Pressure when needed*

In possession:

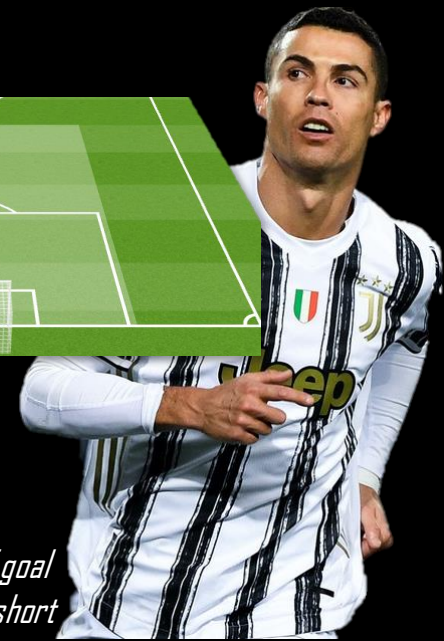
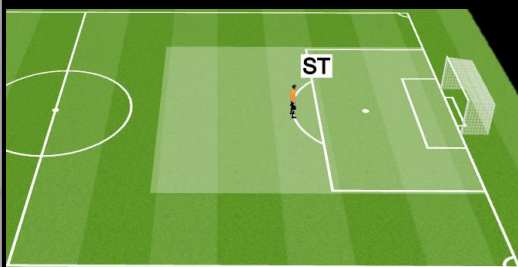
- *Confident in a 1v1 situation*
- *Creative movement on and off the ball*



ST (Striker)

Areas to be..

Click me!



Attributes to look out for..

Out of possession:

- *Condense the field*
- *Apply Pressure when needed*

In possession:

- *Calm & composed in front of goal*
- *Look to run in behind/come short*



FB (Full Back)

Click me!

Areas to be..



Attributes to perform..

Out of possession:

- Force opposition towards touchline
- Get ready to cover

In possession:

- Provide width & depth
- Join the attack & be an option



GK (Goalkeeper)

Click me!

Areas to be..



Attributes to perform..

Out of possession:

- React and adapt to the offense.
- Communicate to your team

In possession:

- Always be an option
- Good distribution & composure